



DLW LINOLEUM COLLECTIONS

ATSM 2034 6'6"	Neocare	98% natural raw ingredients	76% bio-based and rapidly renewable raw materials	100% biodegradable
--------------------------	----------------	---------------------------------------	---	------------------------------

Gerflor DLW Linoleum is a 0.1" (2.5 mm) calendered sheet flooring in 6'6" wide rolls. The colored design is throughout the homogeneous construction and made with natural raw materials including linseed oil, natural tree resins, wood flour, limestone, and colored pigments. The flooring is protected by Gerflor's exclusive Neocare surface treatment that provides easy maintenance, stain resistance and eliminates the need to refinish the flooring. Almost no other floor covering has earned so many major environmental certifications.

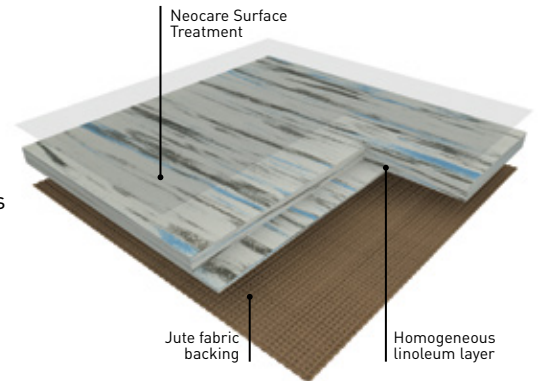
CONTRIBUTES TO A SUSTAINABLE AND WELLNESS FOCUSED ENVIRONMENT

► Materials and Resources

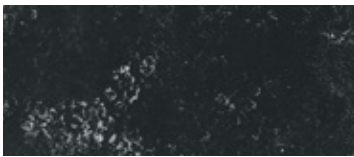
- MR Credit Building Product Disclosure and Optimization - Environmental Product Declarations
- MR Credit Building Product Disclosure and Optimization - Sourcing of Raw Materials
- MR Credit Building Product Disclosure and Optimization - Material Ingredients
- MR Credit Construction and Demolition Waste Management

► Sustainable Attributes

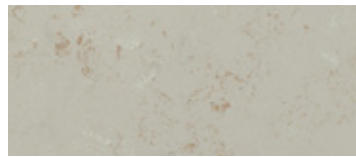
- Cradle to Cradle Certified Silver
- Carbon neutral from cradle to gate
- 76% bio-based and rapidly renewable raw materials



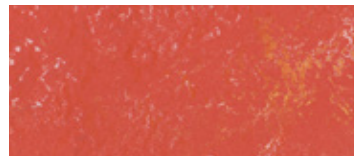
ARABESQUE COLLECTION



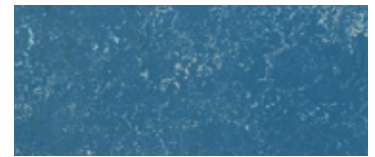
0301 ALCINO



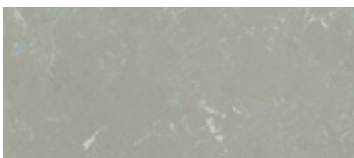
0302 ANTICO



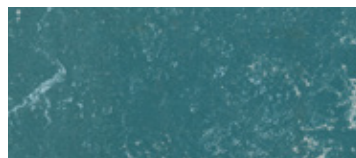
0303 VERONA



0304 SERAVEZZA



0305 MONARCA



0306 PRATO

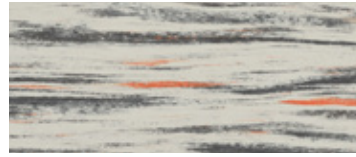
FLOW COLLECTION



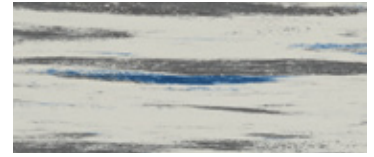
0005 BAMBOO



0012 WATERFALL



0024 MAGMA



0030 RAIN



0036 SHAAL CONCRETE



0043 PULP GREIGE



0048 TRAVERTIN



0050 GREY LINE



0083 LIGHT GREY



0162 BARK

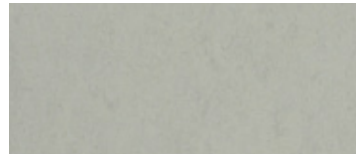
URBAN COLLECTION



0550 BETON SOFT GREY



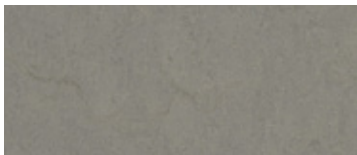
0551 FLASHY ASPHALT GREY



0552 SILVER GREY



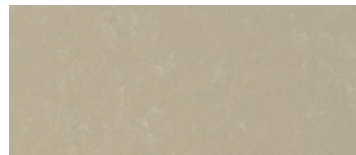
0553 DARK CONCRETE GREY



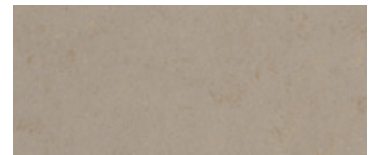
0554 CONCRETE GREY



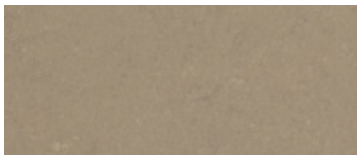
0555 FLASHY STREET GREY



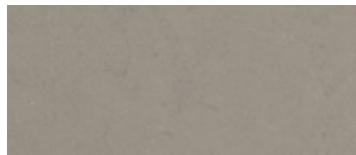
0556 MUD GREY



0557 URBAN GREY



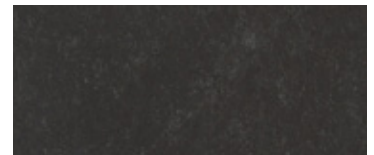
0558 SCREED GREY



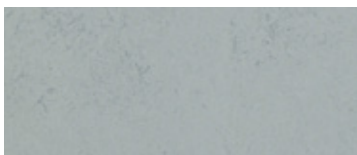
0559 VINTAGE GREY



0560 BOLD GREY



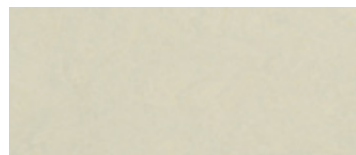
0561 PITCH BLACK



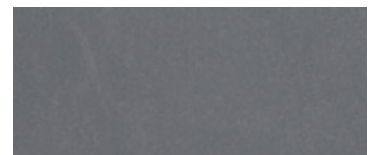
0562 TITAN GREY



0563 ZINC GREY



0564 NATURAL STONE



0565 GRAPHITE GREY



0566 SHINING BLUE



0567 SHINING GREEN

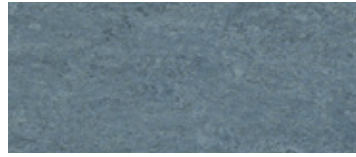
LANDSCAPE COLLECTION



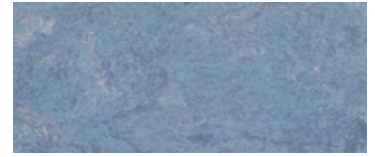
0005 BAMBOO



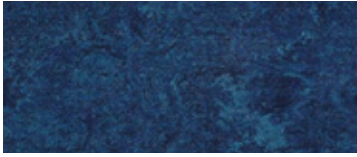
0018 LOBSTER RED



0022 AUTUMN BLUE



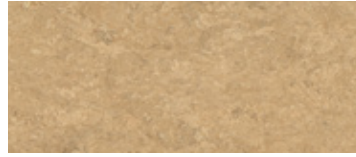
0023 DUSTY BLUE



0028 DIVE



0040 LIGHT SAHARA



0042 SHORTCRUST



0043 LEAF GREEN



0045 SAND BEIGE



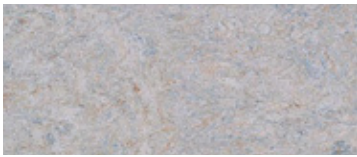
0050 QUARTZ GREY



0053 ICE GREY



0055 ASH GREY



0056 FOGGY BLUE



0059 PLUMB GREY



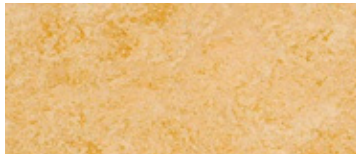
0070 ROCKY BROWN



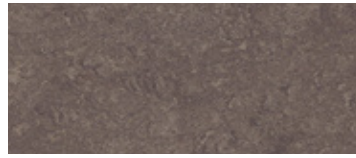
0072 GOLDEN YELLOW



0073 SPICY ORANGE



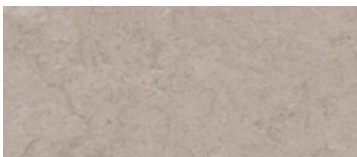
0076 - PALE YELLOW



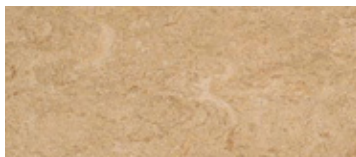
0089 PEACAN PIE



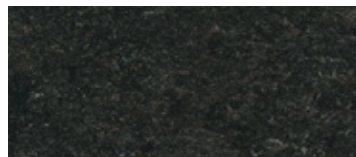
0090 SOAPSTONE



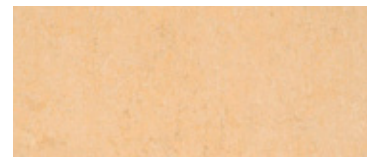
0091 SHIITAKE MUSHROOM



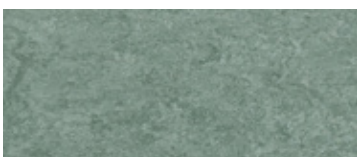
0092 BEACH



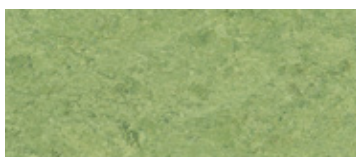
0096 MIDNIGHT GREY



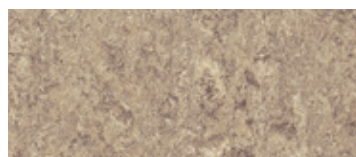
0098 DESERT BEIGE



0099 GREY TURQUOISE



0100 FROG GREEN



0106 HAZELNUT SHAKE



0118 CHILI RED

LANDSCAPE COLLECTION



0119 TERRACOTTA



0121 BLUE EYES



0122 FLUFFY BLUE



0128 VIOLET



0129 CURACAO PETROL



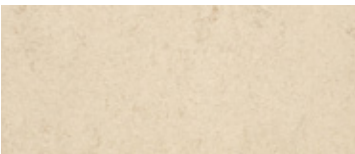
0130 ANTIQUE GREEN



0132 LIME GREEN



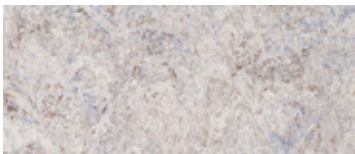
0138 KHAKI



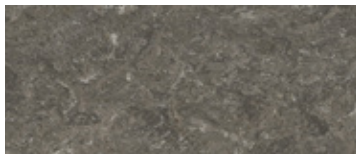
0145 BANANA WHITE



0153 GREYSTONE GREY



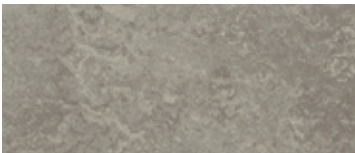
0155 SMOKED PEARL



0158 TABAC GREY



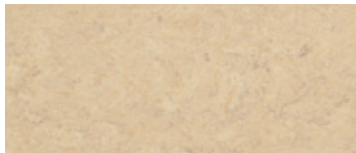
0164 MILK COFFEE



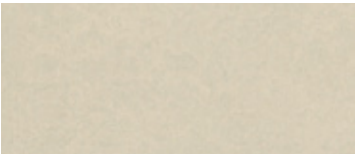
0166 CLAY



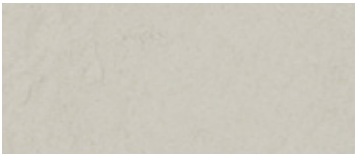
0224 MYSTERY BLUE



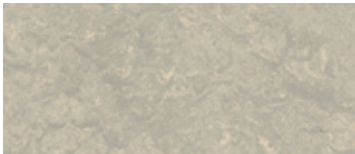
0243 MARBLE BEIGE



0251 CREAM



0252 LIGHT GREY



0253 PEBBLE GREY



0254 MINERAL GREY

DLW LINOLEUM COLLECTIONS

DESCRIPTION / DESCRIPTION	STANDARDS / NORMES	REQUIREMENTS / EXIGENCES	GERFLOR DLW LINOLEUM
PRODUCT DESCRIPTION / DESCRIPTION DE PRODUIT			LANDSCAPE COLLECTION
Specification / Référence	ASTM F2034	-	Type I / Type I
Surface Treatment - Maintenance / Traitement de surface - Entretien	-	-	Neocare™ Solvent-Free Surface Protection / Neocare™ traitement de surface sans solvant
Gauge Total Thickness / Épaisseur Totale	ASTM F386	Nominal / Nominale ± 0.006"	2.5 mm
Roll Width / Largeur du rouleau	-	-	6'6" [2.0 m]
Roll Length / Longueur du rouleau	-	-	Up to / Jusqu'à 98'5" [30 m]
Coverage - Roll / Couverture par rouleau	-	-	Up to / Jusqu'à 645 ft ² [60 m ²]
Weight / Poids	-	-	5.7 lb/yd ² [3.1 kg/m ²]
PERFORMANCE / PERFORMANCE			
Static Load Resistance / Charge statique	ASTM F970	≤ 0.005"	Meets Requirements / Conforme
Modified Maximum Static Load Limit / Charge statique maximum modifiée	Modified Testing / Test modifié	≤ 0.005"	500 psi at 31.6 kg/cm ²
Castor Resistance / Résistance chaise à roulettes	EN 425	-	Meets Requirements, No Visual Change: Suitable for Office Chairs. / Répond aux exigences, pas de changement visuel : Convient aux chaises de bureau.
Slip Resistance / Résistance au glissement	ASTM 2047	-	0.95 (Dry/Sec)
Flexibility / Flexibilité	ASTM F137	0.080"-1.2" 0.100"-1.6" 0.125"-2.0"	Exceeds Requirements (will not crack or break when bent around an 0.80" [20 mm] diameter cylinder). / Répond aux exigences (ne se fend pas ou ne se casse pas lorsqu'il est plié autour d'un cylindre de 20 mm [0,80"] de diamètre).
Chemical & Stain Resistance / Résistance aux Produits Chimiques	ASTM F925	No more than slight change in surface dulling, attack or staining. / Pas plus qu'une légère modification du ternissement, de la détérioration ou de la coloration de la surface.	No Residual Stains, Excellent Results: Meets Requirements. / Pas de taches résiduelles, excellents résultats : Répond aux exigences.
Resistance to Heat / Résistance à la Chaleur	ASTM F1514	ΔE ≤ 8	Meets Requirements / Conforme
Resistance to Light / Résistance à la Lumière	ASTM F1515	ΔE ≤ 8	Meets Requirements / Conforme
Impact Sound Reduction / Réduction des bruits d'impact	ISO 717-2	-	5 dB
Impact Insulation Class (IIC) / Isolement des bruits d'impact (IIC)	ASTM E989 (ASTM E492)	-	45 dB
Composition - Linoleum Cement / Composition - Ciment de linoléum	NF EN ISO 26985	Minimum / Minimum 30%	Meets Requirements / Conforme
Fire Rating - Flame Spread / Classement au feu - Propagation des flammes	ASTM E648 / NFPA253	Class 1 / Classe 1	Meets Requirements Class 1 / Conforme Classe 1
Fire Rating - Smoke Evolution / Classement de résistance au feu - Dégagement de la fumée	ASTM E662 / NFPA258 ASTM E84 / NFPA255	450 or less / ou mois	Meets Requirements / Conforme
Fire Rating Canada / Classement de résistance au feu au Canada	CAN / ULC S102.2	-	FSV 129: SDV: 213
ENVIRONMENT HEALTH & SAFETY / ENVIRONNEMENT SANTÉ ET SÉCURITÉ			
Naturally Bacteriostatic / Naturellement Bactériostatique	ISO 22196	-	Inhibits Spread of Infection at 99% after 24 hours* / Inhibe la propagation des infections à 99 % après 24 heures*
Anti-bacterial activity (E.coli - S. aureus - MRSA) after 24 h / Activité antibactérienne (E.coli - S. aureus - MRSA) après 24 h*	EN ISO 22196 / JIS Z 2801	-	> 99,99% inhibits growth > 99,99 % ne favorise pas la prolifération
Anti-viral activity (Human coronavirus) after 5 h / Activité antivirale (Coronavirus humain) après 5 h*	ISO 21702	-	Inhibits Viral Activity at 98.6% after 5 hours Inhibe l'activité virale à 98.6% après 5 heures
Plant Certifications / Certification d'usine	ISO 9001 ISO 14001	-	Certified / Certifié
Production Waste / Déchets de Production	-	-	100% Manufacturing Waste Recycled / Déchets de fabrication recyclés à 100 %
End of Life / Fin de vie utile	-	-	Biodegradable / Biodégradable
MATERIALS & RESOURCES: BUILDING PRODUCT DISCLOSURE & OPTIMIZATION (BPDO) / MATÉRIAUX ET RESSOURCES: DIVULGATIONS ET OPTIMISATION DES PRODUITS DE CONSTRUCTION (BPDO)			
Environmental Product Declaration (EPD) / Déclaration Environnementale de Produit (EPD)	LEED v4 MR BPDO	1 product / 1 produit	Product Specific Type III / Type de produit III
Sourcing of Raw Materials: Recycled Content / Matières Premières: Contenu Recyclé	LEED v3 MR c4 & v4 MR BPDO	Contributes / Contribue	Up to / Jusqu'à 40%
Sourcing of Raw Materials: Rapidly Renewable Content / Approvisionnement en matières premières : contenu rapidement renouvelable	LEED v3 MR c6	Contributes / Contribue	76%
Sourcing of Raw Materials: Bio-Based Materials / Approvisionnement en matières premières : biomatériaux	LEED v4 MR BPDO	Contributes / Contribue	100% USDA Certified Bio-Based / Certifié biologique à 100 % par l'USDA
Sourcing of Raw Materials: Restriction Use of Harmful Chemicals / Aucune Utilisation de Produit Chimique Nocif	LEED v4 MR BPDO	Contributes / Contribue	100% REACH Compliant, Declare Label / Conformité complète au règlement REACH, étiquette déclarée
MATERIALS & RESOURCES: INDOOR ENVIRONMENTAL QUALITY (IEQ) / MATÉRIAUX ET RESSOURCES : QUALITÉ DE L'ENVIRONNEMENT INTÉRIEURE (IEQ)			
Low Emitting Materials / Qualité de l'Air Intérieur	LEED v3 IEQ c4.3 & v4 IEQ	Contributes / Contribue	FloorScore® Certified, Blue Angel Certified
TVOC After 28 Days / TVOC Après 28 Jours	ISO 16000-6	-	<10 µg/m ³ [micrograms]
WARRANTY / GARANTIE	10-year limited warranty when installed in accordance with Gerflor's installation instructions on gerflorusa.com / Garantie limitée de 10 ans du fabricant lorsque le produit est installé conformément aux instructions d'installation de Gerflor disponibles sur gerflorcanada.com		

* The implementation of an effective cleaning method is the best defence against infection. / Le respect des protocoles d'entretien des sols est la meilleure garantie contre les infections.

Yellowing / Jaunissement: Linoleum may have a TEMPORARY yellow cast, caused by oxidation of linseed oil, which will vary in intensity based on color of material and room conditions. The intensity of the yellowing will be more visible on lighter colors and will disappear when exposed to light. / Le linoléum peut présenter une teinte jaunâtre temporairement, provoquée par l'oxydation de l'huile de lin, dont l'intensité varie en fonction de la couleur du matériau et des conditions ambiantes. L'intensité du jaunissement sera plus visible sur les couleurs claires et disparaîtra lors de l'exposition à la lumière.

